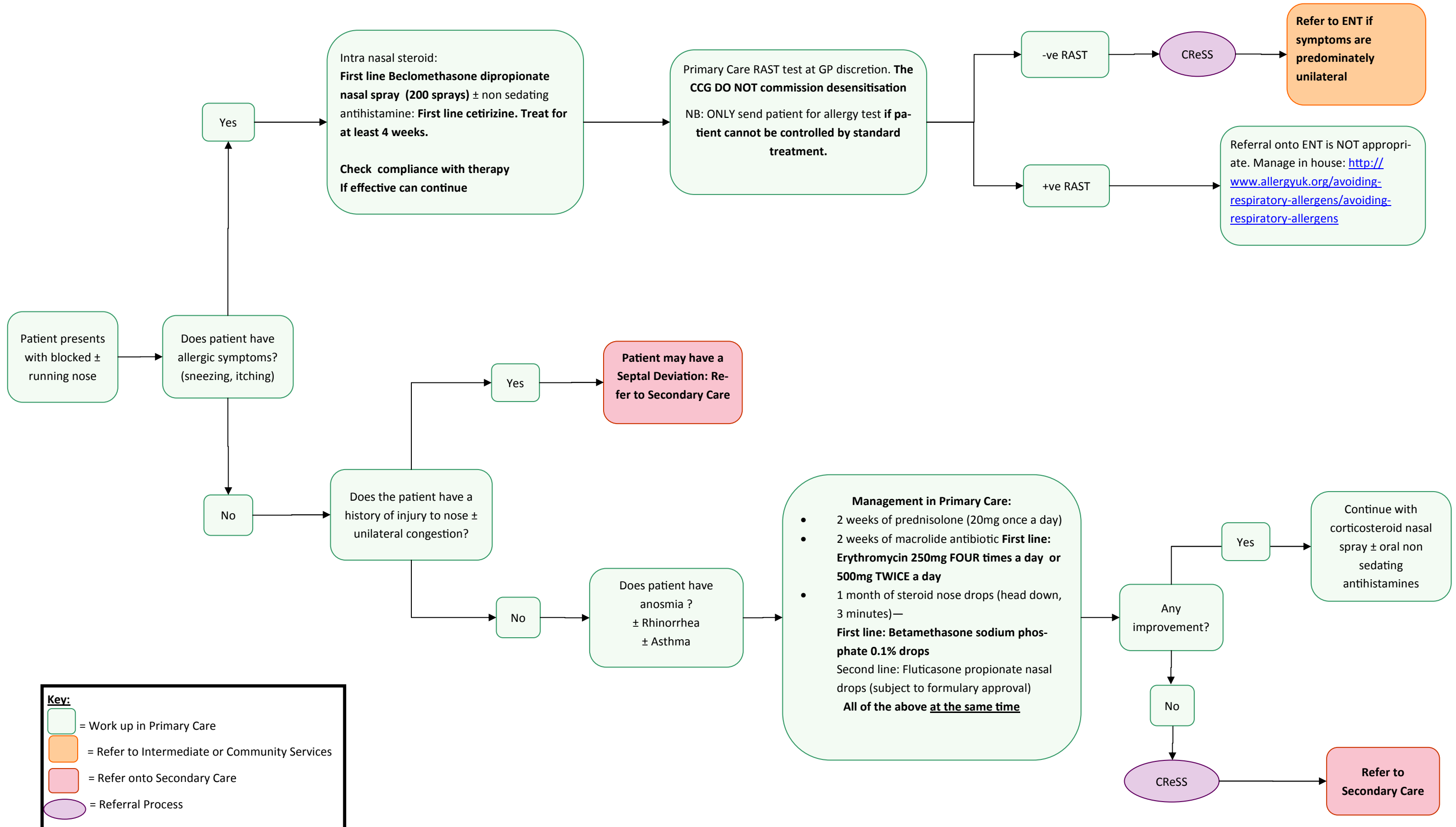
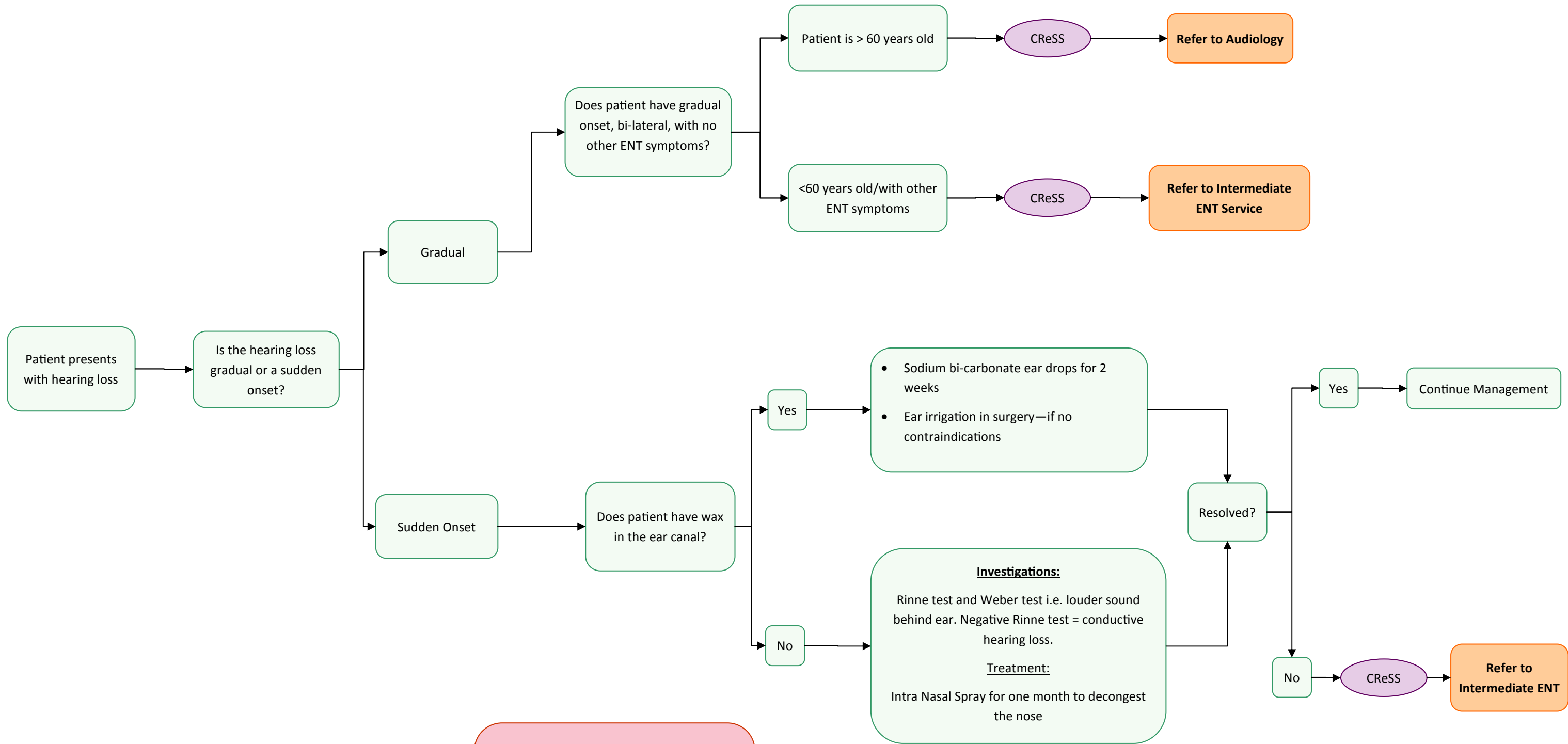


ENT Primary Care Guidelines in adults: Rhinitis



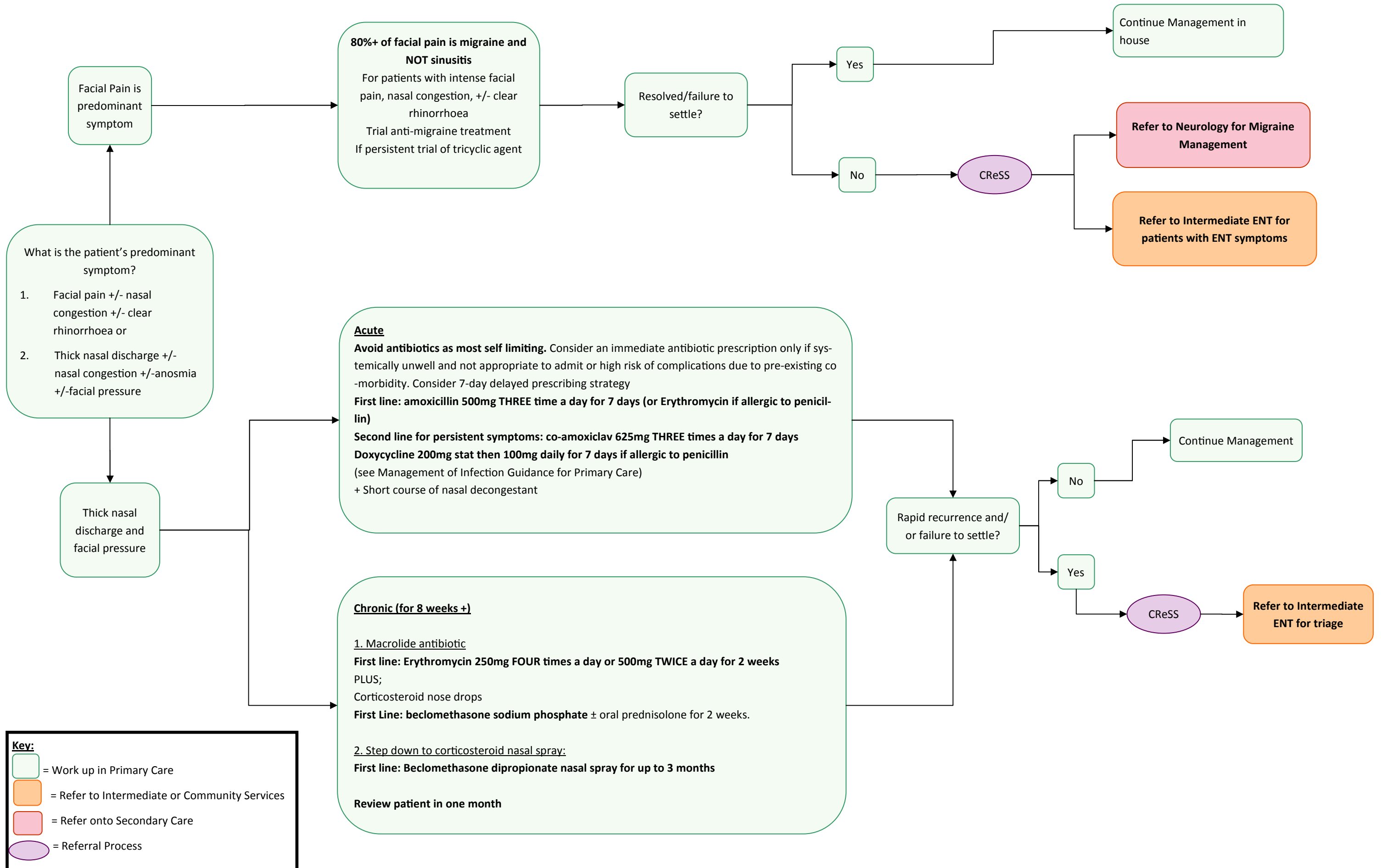


**URGENT REFERRAL:**  
If patient presents with a sudden onset of sensory neural hearing loss (SNHL) refer urgently into ENT within 24 hours—contact the SHO on call.

**Key:**

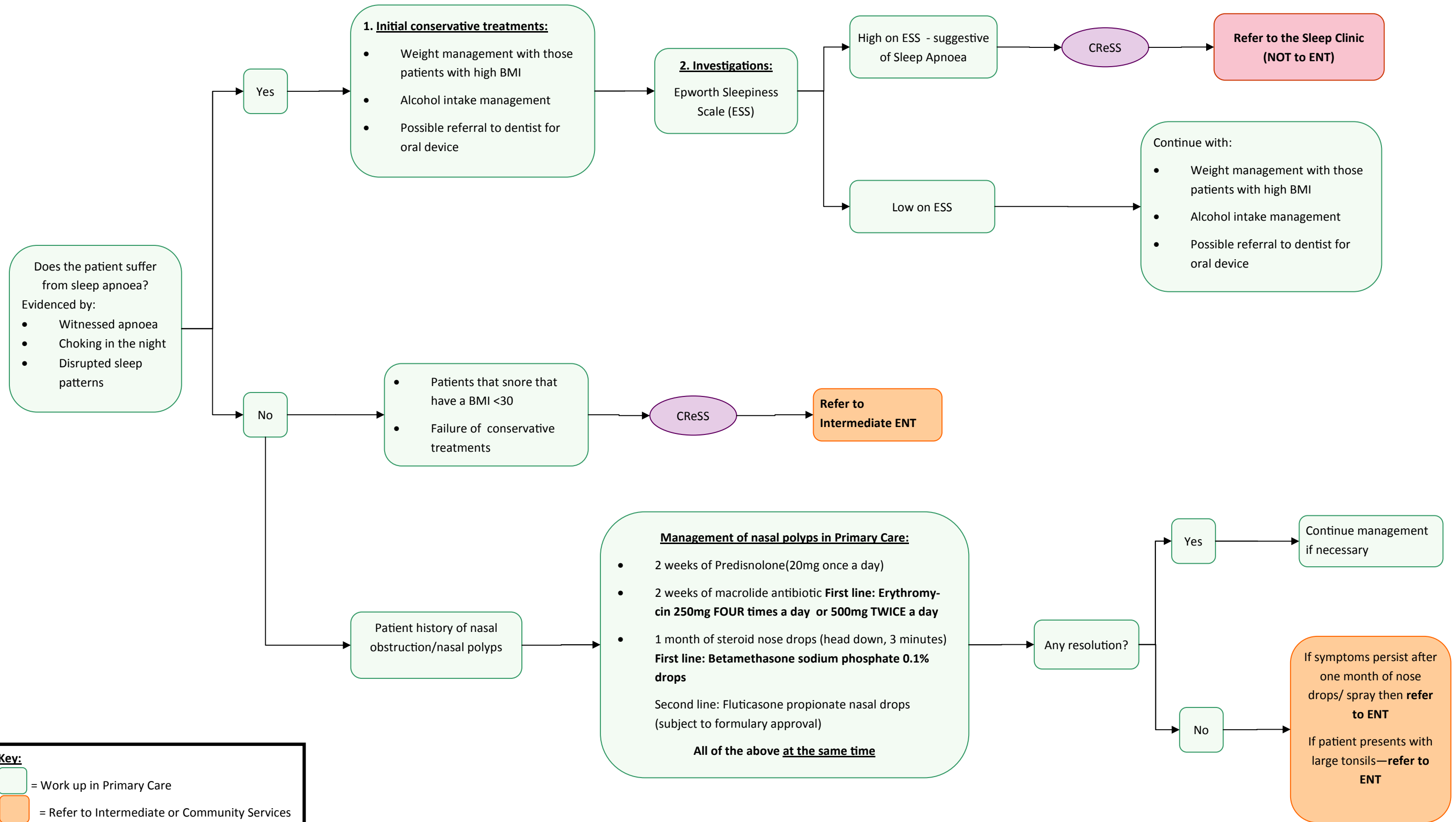
- = Work up in Primary Care
- = Refer to Intermediate or Community Services
- = Refer onto Secondary Care
- = Referral Process

**Primary Care ENT Guidelines in adults: Sinusitis and Facial Pain**



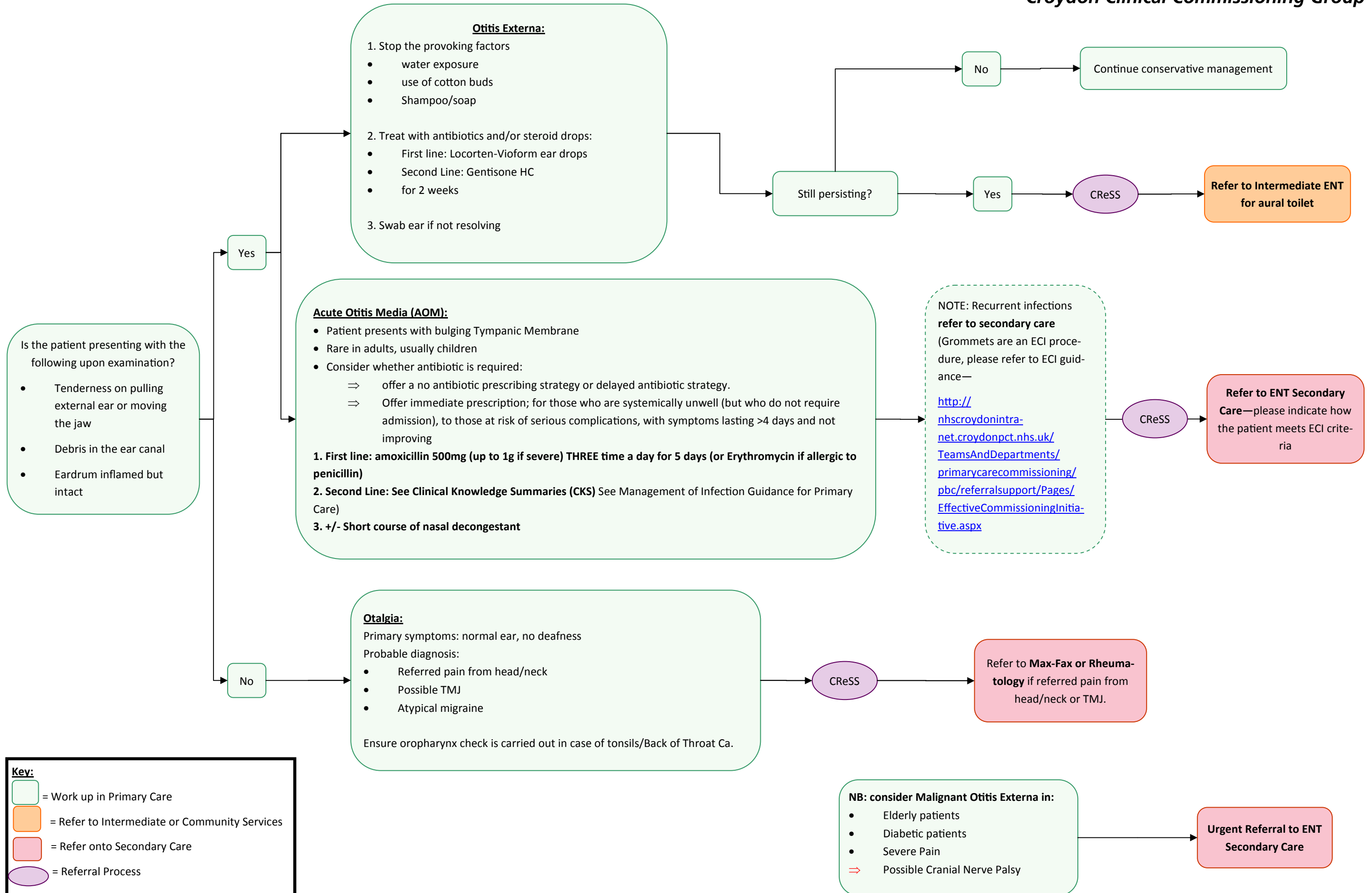
**Key:**

- = Work up in Primary Care
- = Refer to Intermediate or Community Services
- = Refer onto Secondary Care
- = Referral Process



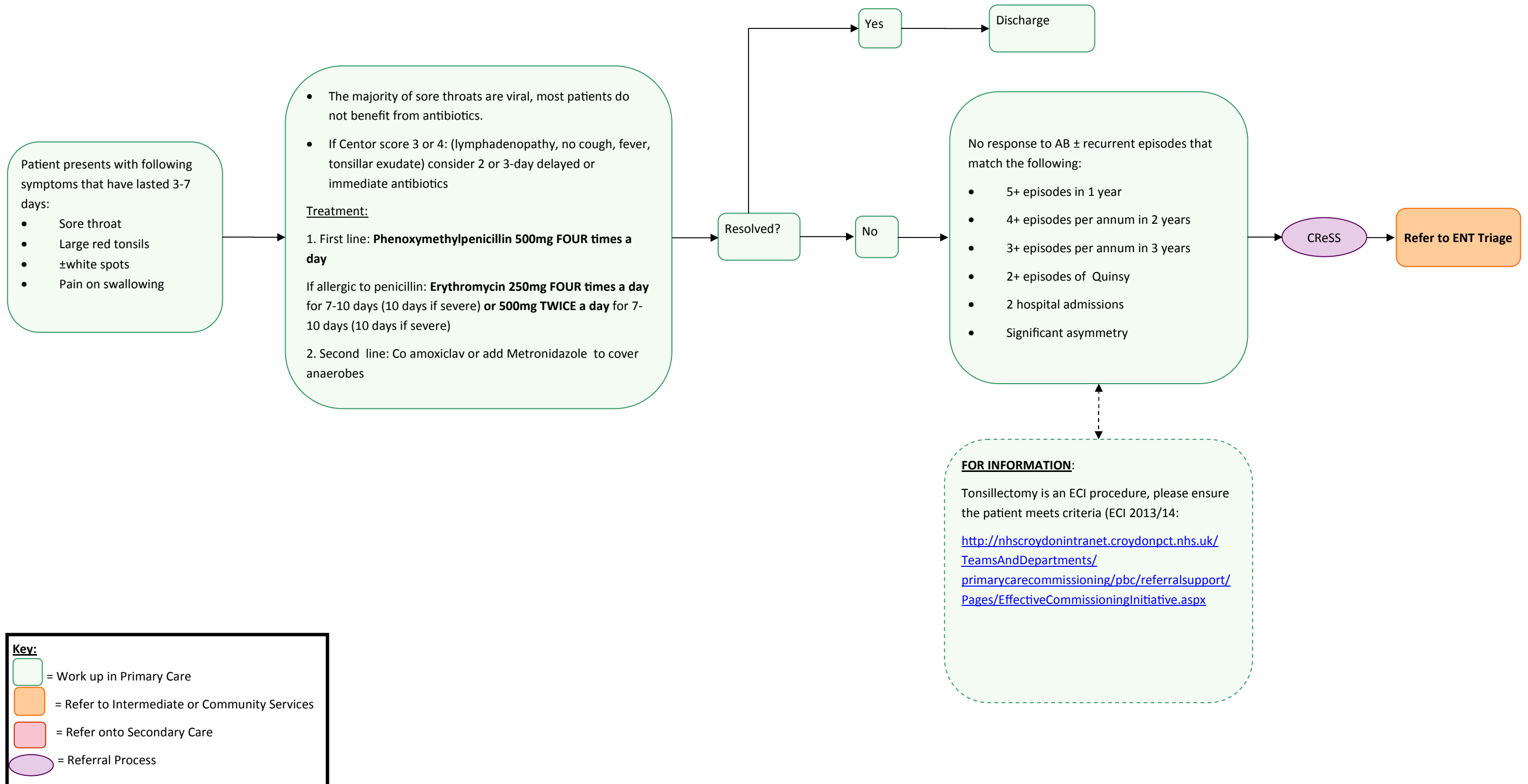
**Key:**

- = Work up in Primary Care
- = Refer to Intermediate or Community Services
- = Refer onto Secondary Care
- = Referral Process



**Key:**

- = Work up in Primary Care
- = Refer to Intermediate or Community Services
- = Refer onto Secondary Care
- = Referral Process

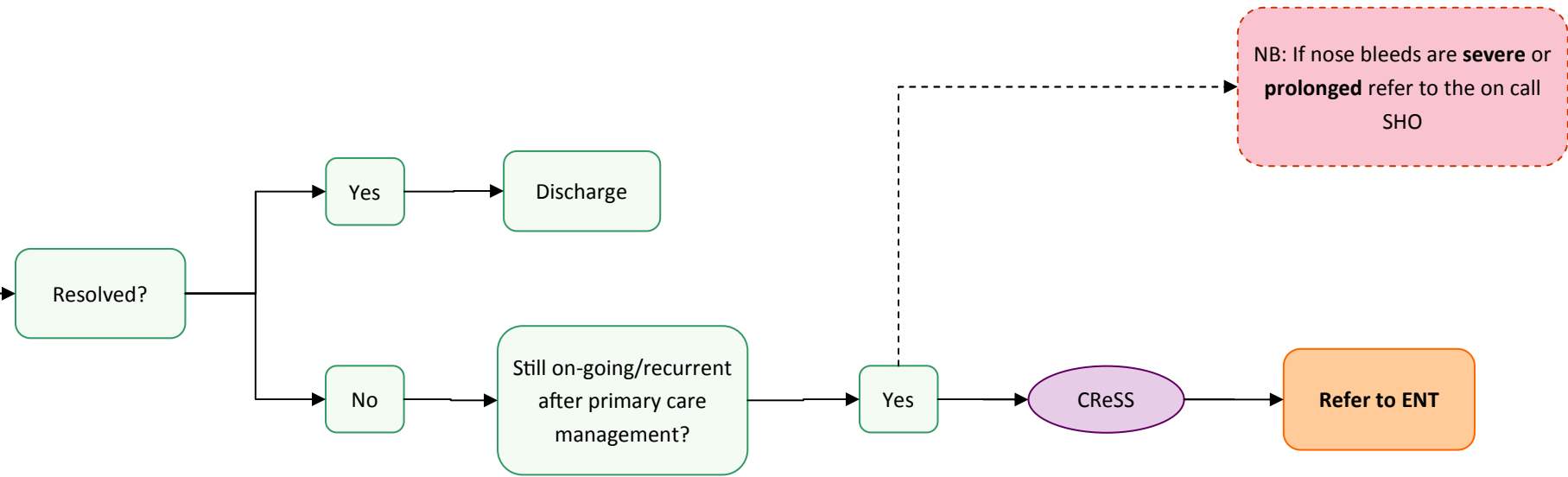


**Key:**

- = Work up in Primary Care
- = Refer to Intermediate or Community Services
- = Refer onto Secondary Care
- = Referral Process

**Primary Care ENT Guidelines in adults: Epistaxis (Nose Bleeds)**

- Consider stopping aspirin
- Check with specialist before stopping clopidogrel. Clopidogrel should not be stopped earlier than recommended without discussion with the initiating clinician when used combination with aspirin e.g. post cardiac stent insertion
- Investigate for possible underlying bleeding problems
- Trial Naseptin cream FOUR times a day for 10 days (not for those allergic to peanuts)



**Key:**

- = Work up in Primary Care
- = Refer to Intermediate or Community Services
- = Refer onto Secondary Care
- = Referral Process